

4801 GAILLARDIA PARKWAY

Suite 250



LEASE DETAILS

Available SF: 13,715 SF

Lease Rate: \$24.00/SF/YR

Lease Type: Full Service Gross

Building Size: 74,432

Market: Memorial Corridor

PROPERTY OVERVIEW

4801 Gaillardia is designed to complement the Normandy style of the adjacent Gaillardia Country Club. The lower portions of the building are clad in natural stone. The use of full-height glass and punched windows give the exterior a multi-dimensional presence. The interior is highlighted by a two-story atrium lobby featuring granite floors and walls clad in travertine and dark natural woods which repeat in the upper floor elevator lobbies. The building avails the tenant with views of the golf course on three of its four sides.

PROPERTY HIGHLIGHTS

- Close to numerous restaurants and shopping centers
- 9' ceilings
- Fiber-optic communications
- On-site building engineer
- Golf Course views

TRE DUPUY

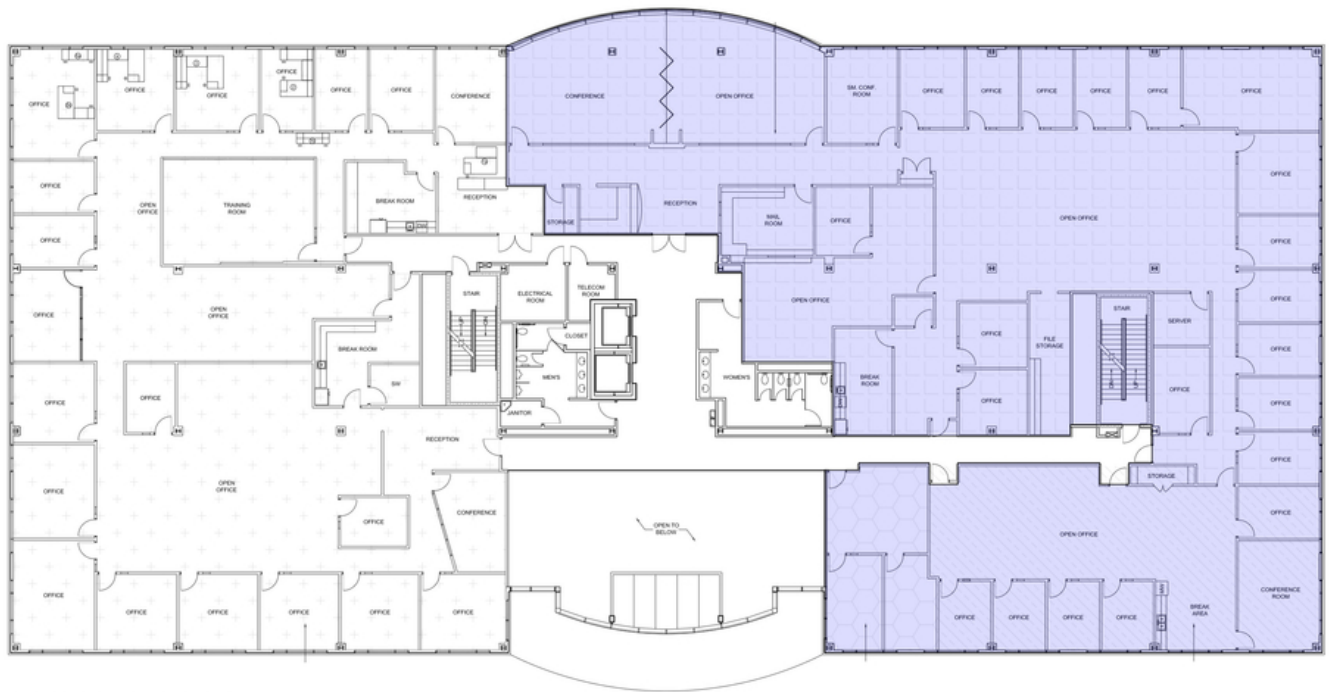
Office Specialist
405.843.7474
tduvuv@priceedwards.com

CRAIG TUCKER

405.843.7474
ctucker@priceedwards.com

4801 GAILLARDIA PARKWAY

Floor Plan



2 SECOND FLOOR PLAN
Scale: 1/8" = 1'

TRE DUPUY

Office Specialist

405.843.7474

tduvuv@priceedwards.com

CRAIG TUCKER

405.843.7474

ctucker@priceedwards.com

4801 GAILLARDIA PARKWAY

Additional Photos



TRE DUPUY

Office Specialist

405.843.7474

tduvuv@priceedwards.com

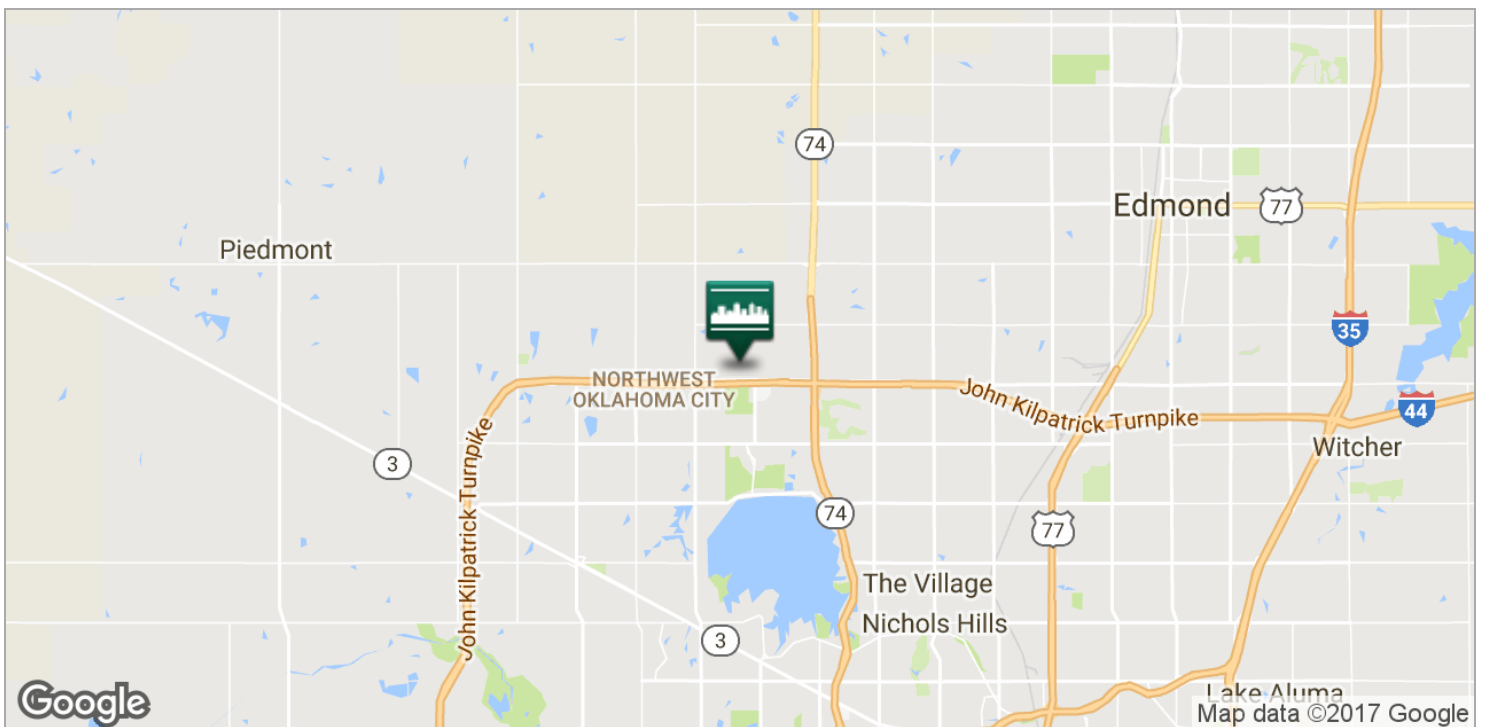
CRAIG TUCKER

405.843.7474

ctucker@priceedwards.com

4801 GAILLARDIA PARKWAY

Location Maps



TRE DUPUY

Office Specialist

405.843.7474

tduvuv@priceedwards.com

CRAIG TUCKER

405.843.7474

ctucker@priceedwards.com